

Workshop details

# Dementia in Wirral

*A Population Health Perspective*

Jackie Davidson

**November 2025**

**Data compiled by Public Health Intelligence Team, Wirral Council**



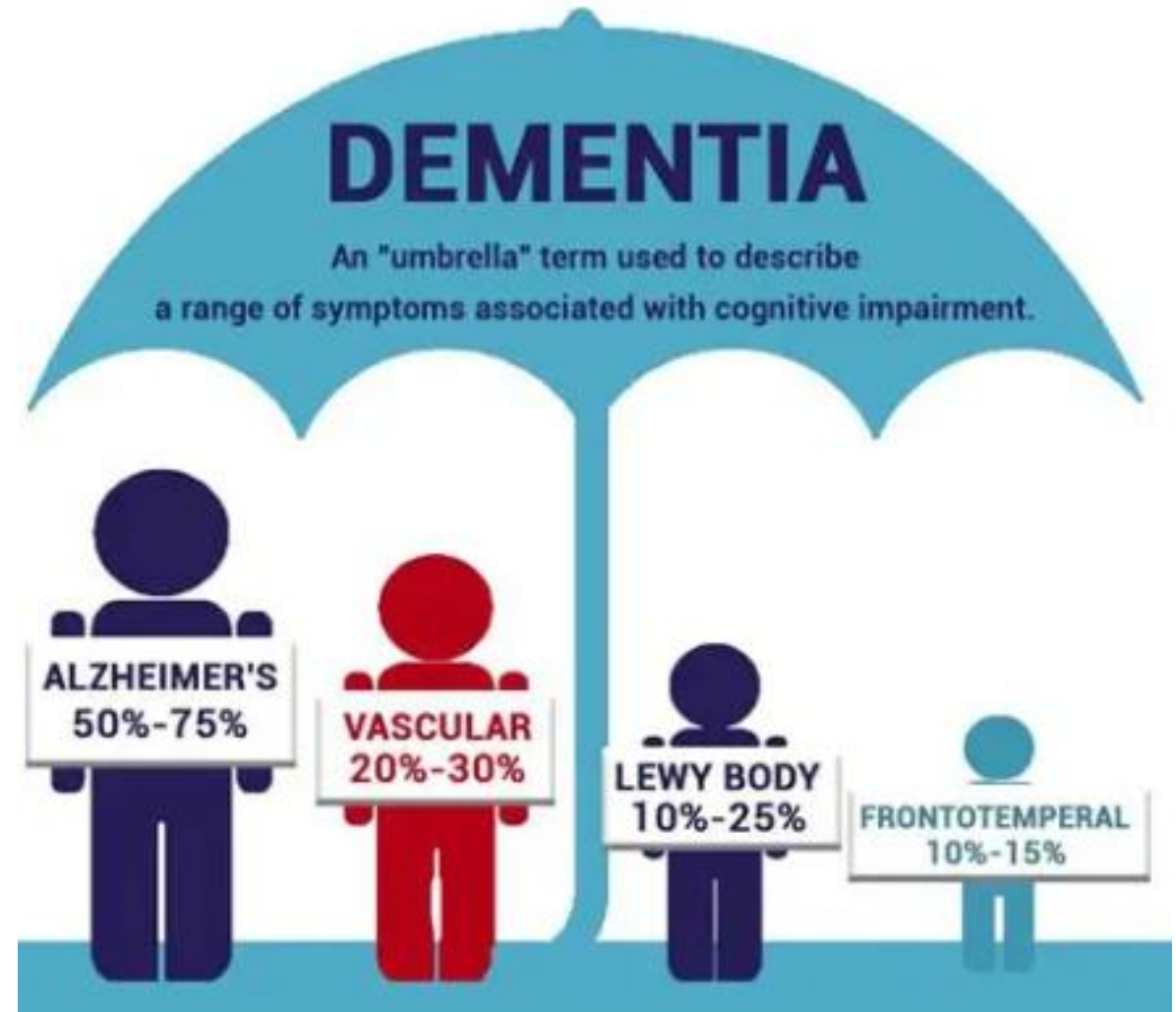
# Introduction: Dementia

## What is Dementia?

Dementia is a group of related symptoms associated with an ongoing decline of brain functioning.

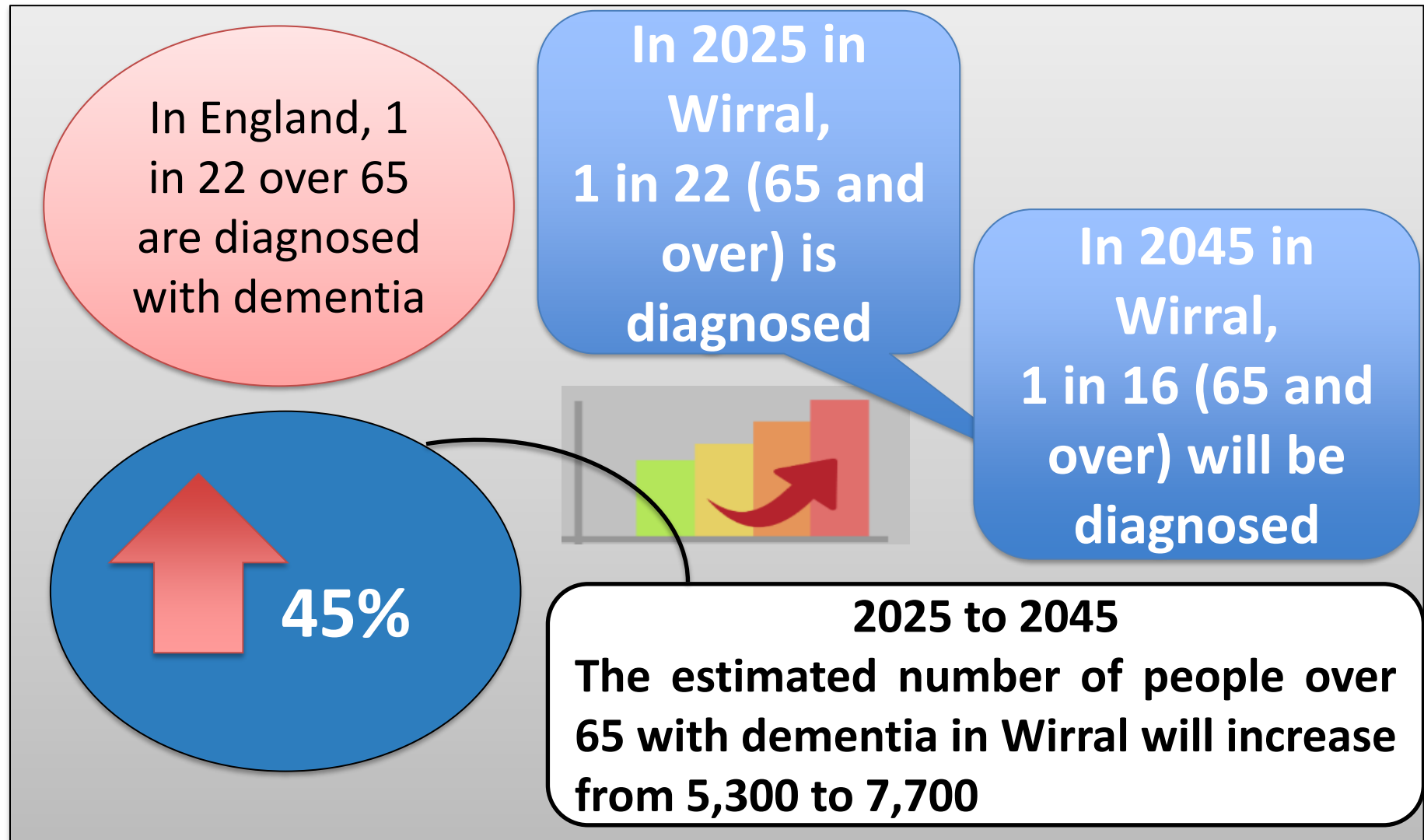
## Types of Dementia

Alzheimer's is the most common type, followed by Vascular, Lewy body, and frontotemporal dementias.



# Trends: Dementia Prevalence is Increasing

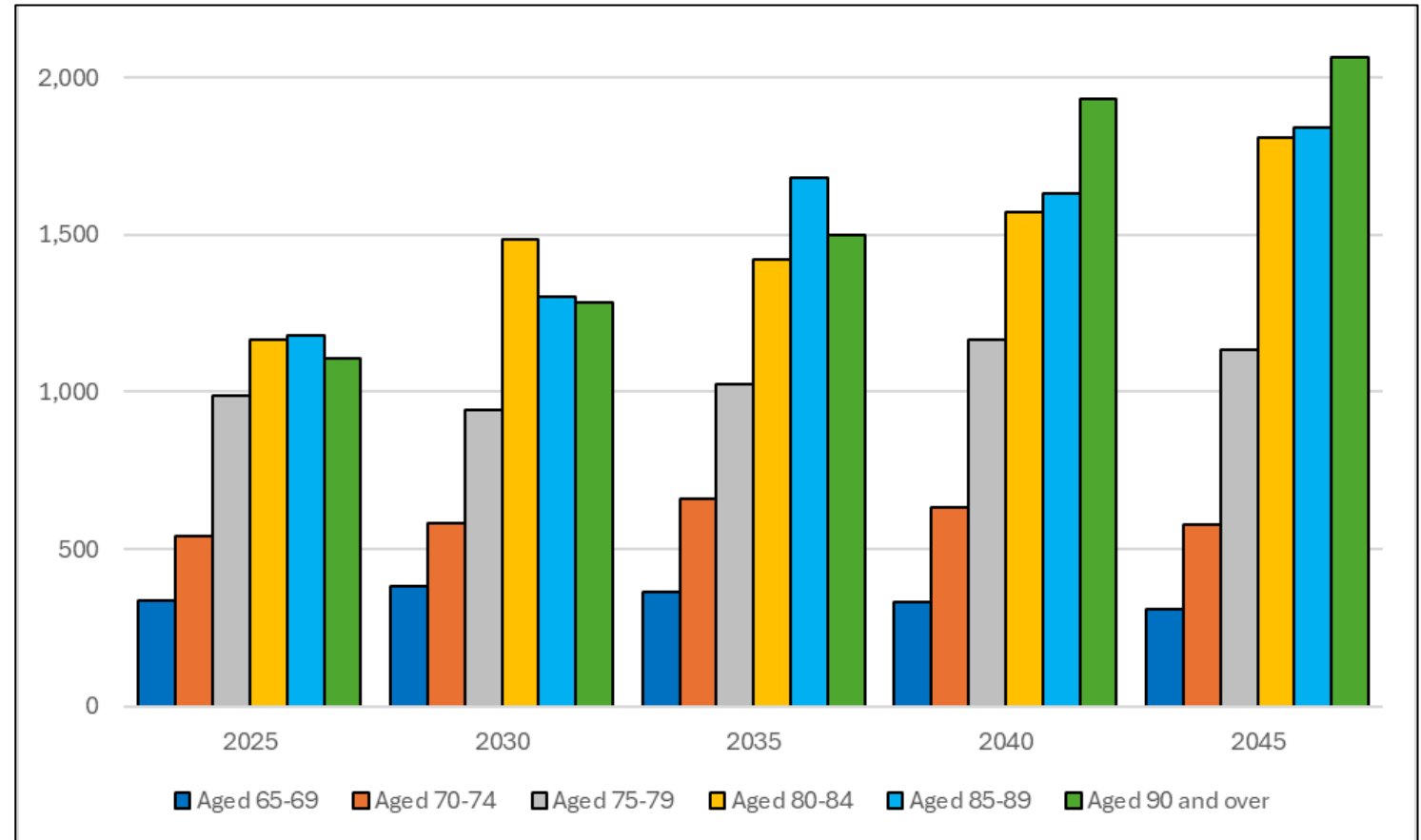
Dementia prevalence is rising sharply



# Trends: Demand will Continue Despite Reduction in Prevalence in Lower Age Groups

## Age Prevalence Trends

This increase is projected across all age groups apart from those aged 65-69 (decrease of 8.6%). Greatest increase of 86.2% in those aged 90 plus

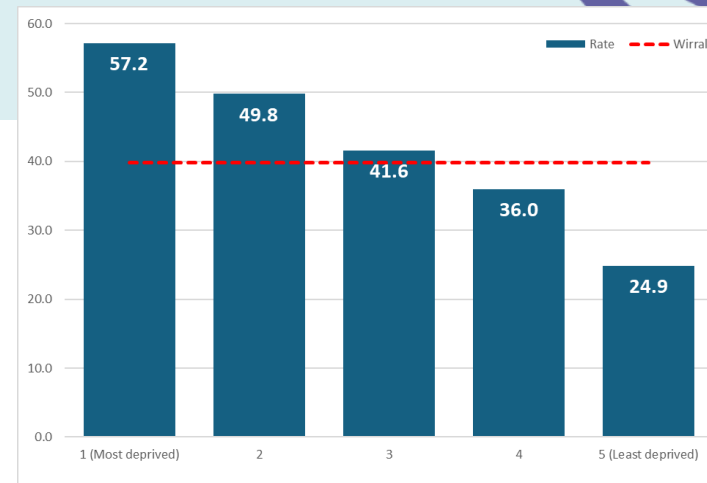


*Graph 1: Number of people in Wirral predicted to have dementia by age group*

# Preventing Well- Actual Dementia Diagnosis Rates and links to deprivation

- Deprivation seems to be linked to the rate of people aged 65 and over diagnosed with dementia. Twice as many diagnoses are in most deprived areas compared to least deprived.
- 57.2 persons per 1000 people aged over 65 residing in the 20% most deprived areas compared to 24.9 in the 20% least deprived areas.
- The quintiles with the highest rates of dementia are also areas with highest levels of deprivation.

## Indices of Deprivation



Graph 2: Rate of people aged 65 diagnosed with dementia per 1000

# Preventing Well- Dementia is NOT a Natural Part of Ageing



Dementia is **not** a natural part of ageing

**Age and lifestyle choices** like diet, inactivity, smoking, and alcohol increase dementia risk, as do the **social determinants** of health.

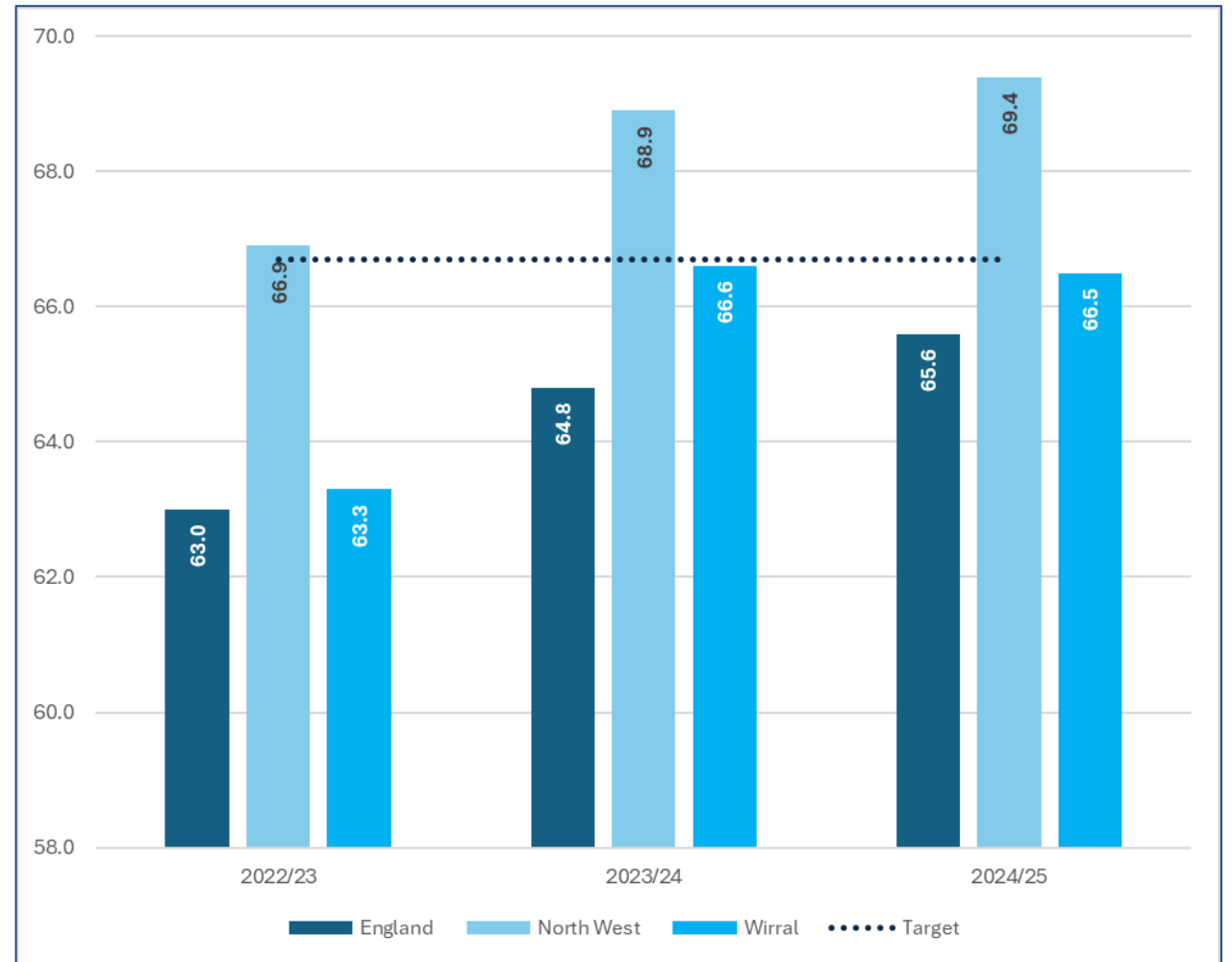
**NHS Health Checks** are a recognised intervention to help prevent dementia

# Diagnosing Well: It is important to catch dementia early

It is *important to catch dementia early*, to slow its progression and maintain mental function longer.

Dementia can be *difficult to recognise* due to the slow decline that it causes. It requires awareness and personal acknowledgement, as well as that of those close to someone with dementia

The estimated diagnosis rate for Wirral is **66.5%**



Graph 2: Estimated Dementia Diagnosis Rate (Age 65+): Wirral, North West and England, 2022/23 to 2024/25

# Supporting Well in the community: Poorly managed dementia has severe consequences, but these are avoidable

- Poorly managed dementia can lead to emergency hospital admissions for avoidable illnesses/injuries.
- In Wirral, **87% of admissions are emergency** (mostly via A&E).
- An unfamiliar environment causes distress, confusion, and delirium, leading to functional decline and reduced chances of independent living.
- In **Wirral only 20.8% of patients with dementia are discharged within 24 hrs** compared to 61.4% in general population.



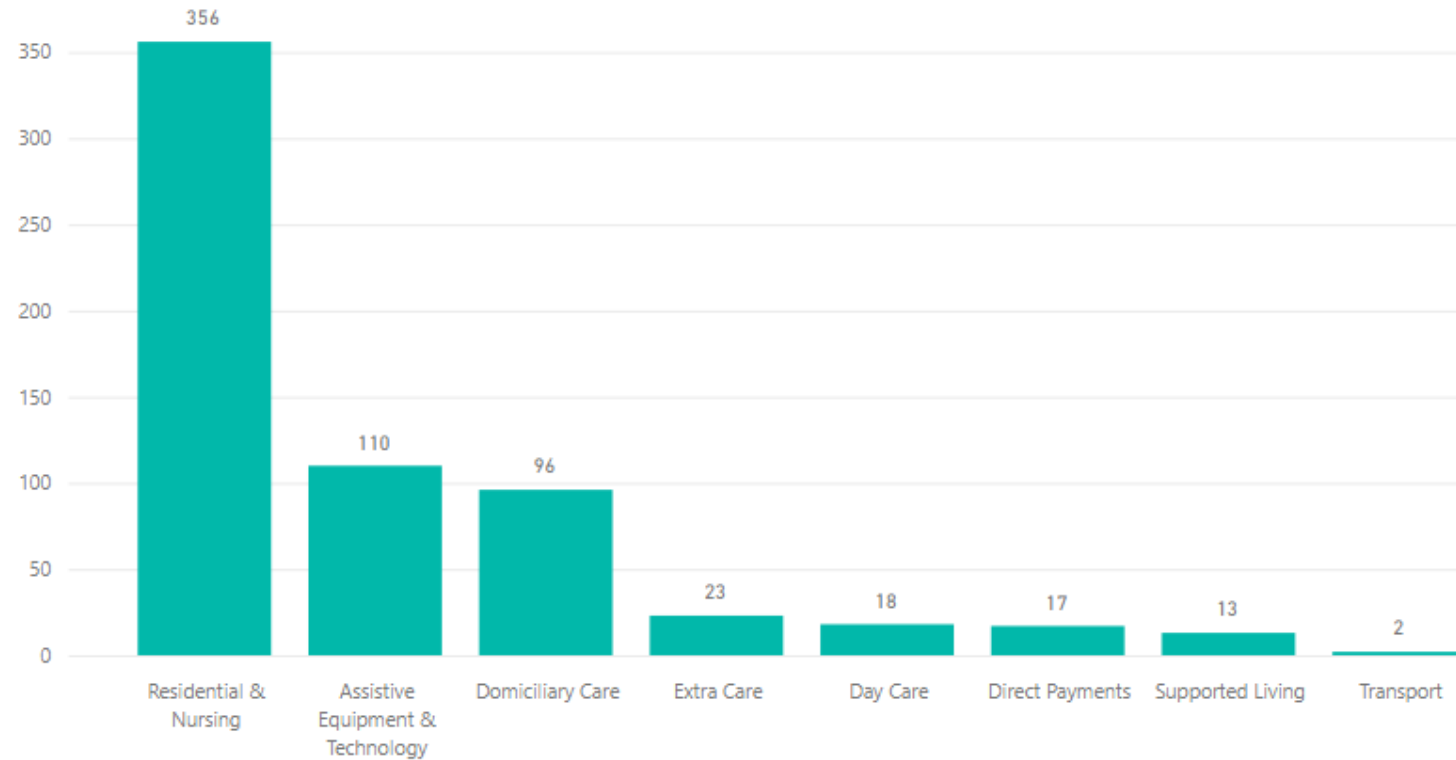
# Supporting Well in the Community: Dementia Care Plans Can Reduce the Risk of Adverse Consequences



- 67.8% of patients with dementia had an annual care plan review as of September 2025.
- The best performing primary care network had completed 80% and the least performing 55.3%.

# Supporting Well in the Community: Social Care Packages

Current carepackages for people with dementia



- There are **1147** Adult Social Care Clients recorded as having dementia
- Approx. 48% live at home (with family), 25% live alone and 25% live in care homes.
- As of October 2025, 55% of adult social care clients have a care package. The graph shows the most frequent care provisions.
- The majority have a residential and nursing home care package.
- Care-home residents projected +45% by 2045.

Source: Wirral Intelligence Services. Data accessed 2/11/2025

# Supporting Well in the Community: Carers Support



- Of the 1147 people with dementia there are **394** and **140** people identified as **main carers** and **informal carers**, respectively.
- This equates to **46.6%** having an unpaid carer (**34.3%** - having a **main carer** and **12.2%** having an **informal carer**)

# Dying Well in the Community:



- The place of death for people with dementia is shifting with fewer deaths in hospital, and more deaths at home
- In **2016**, 32.1% of deaths were in hospital, 10.4% at home and 54.8% in a care home. In **2023**, 22.2% of deaths were in hospital, 14.4% at home and 62.7% in a care home.
- There are 3× more deaths in the most deprived deciles.